



BYC Summer Cruise

July 10 - 19, 2021



Day	Date	Port	Miles
1. Saturday	10-Jul	Point Judith	27
2. Sunday	11-Jul	Stonington Harbor	24
3. Monday	12-Jul	Stonington Harbor	0
4. Tuesday	13-Jul	Mystic	7
5. Wednesday	14-Jul	Shelter Island	27
6. Thursday	15-Jul	Shelter Island	0
7. Friday	16-Jul	Three Mile Harbor	10
8. Saturday	17-Jul	Three Mile Harbor	0
9. Sunday	18-Jul	Block Island	33
10. Monday	19-Jul	Bristol	34

General Information

Communication

The Fleet and Day Captains will monitor VHF channel 72 for official cruise business throughout the cruise from sunrise to sunset. You may call Fleet Captain Brad deWolf directly by mobile phone at 401-545-0044 if you need immediate assistance. There will be a daily check-in at 0800 on Channel 72 to review current conditions, any last-minute sailing and evening activity updates and to answer questions. If the departure time is earlier than 8:00 due to tides, etc. the new call time will be announced the evening prior.

If you decide to not go to a port that you signed up for, please make sure you notify either the Fleet Captain or the Day Captain for that port.

Flags

Please fly your Bristol Yacht Club burgee night and day so that other boats in the cruise can recognize you. Other signals may be flown at each skipper's discretion.

Navigation meetups

Skippers interested in discussion of the next day's course options and sailing advice meet during or after each day's cocktail hour. Time for meeting will be announced at cocktail hour.

Activities

Highlights of evening activities are listed below. Further details are available in the Gathering section of the specific port.

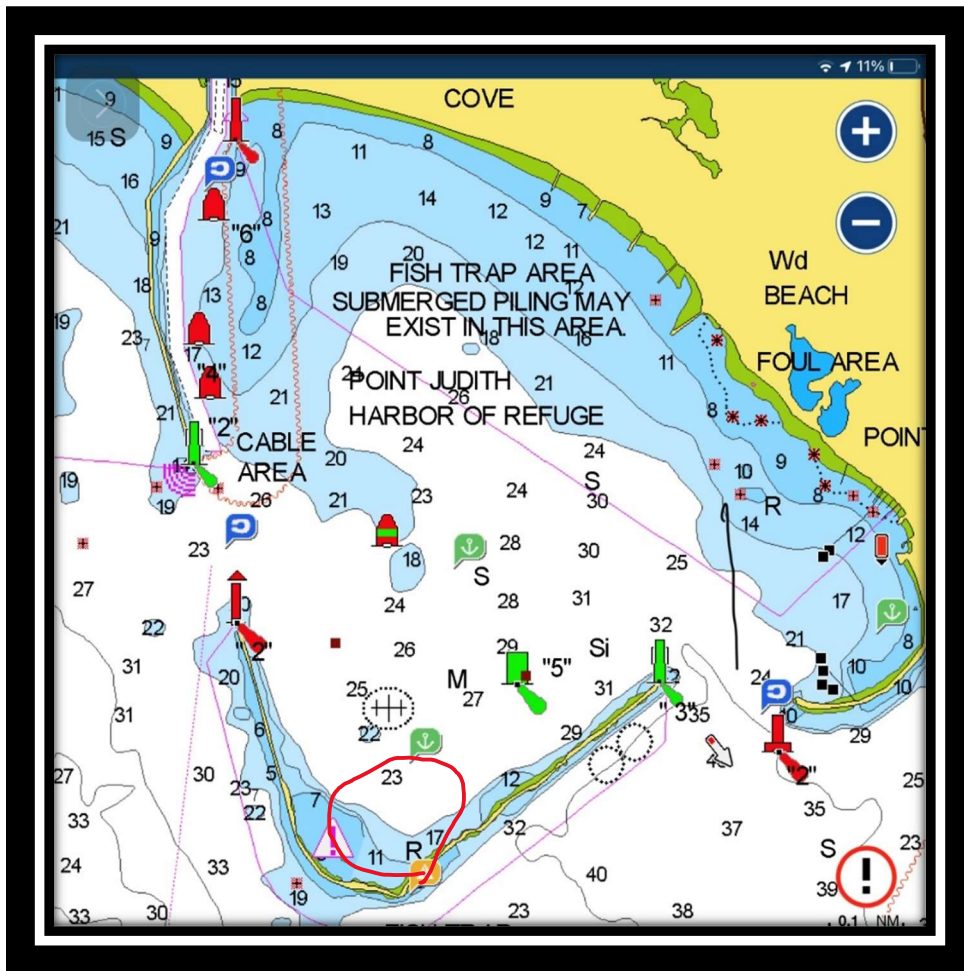
Port	Gathering Spot	Time	Drink of the Day	What to Bring & Info
Point Judith Refuge	Dinghy Rally around Brad's Yacht Be sure to anchor In SW corner	6:00 PM	Gin & Tonic	<ul style="list-style-type: none"> • Everyone to wear life vests and BYC caps. Brad provides tunes • Cruise T shirts to be given out
Stonington Harbor	Dog Watch Café at Dodson's Boatyard	6:00 PM	Rum Punch	<ul style="list-style-type: none"> • Catered Dinner by Dog Watch Café • Bring Chairs and Tables
Stonington Harbor	Lunch at Breakwater See notes Free Night	12:00PM		There is a dinghy dock at the restaurant if you don't want to walk down Water Street.
Mystic Seaport	Free Night			
Shelter Island	Shelter Island Yacht Club	5:30 PM Cocktails 6:00PM Dinner		3 course plated dinner for those that have reserved . Nice attire, jackets not required. No denim. Must wear shoes
Shelter Island	Free Night			Restaurants available: a. Shelter Island Yacht Club – make a reservation prior. b. Ferry to Greenport. c. Some in town near club
Three Mile Harbor	Gathering on Sammy's Beach	6:00pm	Pot Luck Appetizers and Sangria	<ul style="list-style-type: none"> • Bring chairs and tables to beach and Potluck Appetizers. • Lots of great restaurants in town for dinner
Three Mile Harbor	Fireworks!!!	9:00PM		Enjoy from your boat
Block Island New Harbor	Dead Eye Dicks	5:30pm & 6:30pm 2 seatings		Dinner at Dead Eye Dick's * Located at entrance to Payne's * Seating time selected at port

2021 Ports of Call

Saturday, July 10, 2021: Point Judith Refuge

DAY CAPTAIN: Brad de Wolf, bradforddewolf@gmail.com

This anchorage offers an easy sheltered stop with good hold. You will enjoy a spectacular sunset and sunrise in good weather.



No transient moorings are available. You must anchor.

ACTIVITY

We will gather by dinghy off the stern of Eleanor and her raft partners for your Drink-of-the-day, Gin and Tonic at 1700. Bring some hors-d'oeuvres to share if you would like.

DISTANCES

From the Bristol Yacht Club, the entrance to Point Judith Refuge is about 24 nautical miles. The anchorage is inside the breakwater to the south.

NAVIGATION

The entrance to the Harbor of Refuge is Well-marked. Your first mark to the east opening is [R FL R 4S] Red lateral buoy (shape: pillar) "Point Judith Harbor of Refuge East Entrance Lighted Buoy 2" having red flashing light with a period of 4 seconds. The harbor is well marked and has good water. We will be in the center south end. A large BYC Burgee will be flown.

TIDES AND CURRENTS

On Saturday July 10th, high tide occurs at about 10:24 and again at about 21:39, with low tide at 04:39 and 16:39. The current into the refuge will be less than 3/4 of a knot between 13:00 and 18:00.

FACILITIES

The marinas in Pt. Judith harbor, a mile southwest of the anchorage, offer ice, water, and fuel, as well as deep-water dockage. The marinas at the north end of the Pond at Wakefield, a mile north of the anchorage, offer the same. Restaurants can be found in Wakefield, Snug Harbor, Jerusalem, and Galilee.

NOAA CHART

Chart 13219, Point Judith Harbor, can be found at <http://www.charts.noaa.gov/OnLineViewer/13219.shtml>

FURTHER READING

Focus on Point Judith, Rhode Island, New England Boating,
<http://newenglandboating.com/destinations/focuson-point-judith-rhode-island.html>

Sunday & Monday, July 11 – 12, 2021: Stonington Harbor



DAY CAPTAINS: Brian and Carole McFarland brainmcf318@gmail.com or carolemcfarland@gmail.com

BRIEF DESCRIPTION of PORT of CALL:

Stonington is a pretty town with a large harbor protected by entrance breakwaters, each marked by a light. We are renting moorings from Dodson Marine, a full-service boatyard at the head of the harbor on the starboard side. The Dodson launches are usually very active in the mooring field. The town of Stonington is very walkable, with shops, restaurants, classic New England architecture, and harbor views.

DISTANCE:

About 24 miles from Point Judith Refuge to Stonington Harbor

NAVIGATION:

Depart Point Judith Refuge, and navigate west along the RI coast to Watch Hill Point, R2 (wave to Taylor Swift as you pass). Continue west to flashing red #6 at Napatree Point Ledge and then turn northwest to R2 at Middle Ground. Head north past the two lighted breakwaters and into Stonington Harbor.

TIDES AND CURRENTS:

The current going west from Pt. Judith will be in our favor in the morning. At Watch Hill Point the Ebb starts around 12:30pm, so the current will be against us after 12:30 going into Stonington. It will peak near 2.2kt around 3:30pm. With 24 miles at an average 5kt, you would want to leave Pt. Judith around 7:30am to beat the current. You may average better than 5kt with the favorable current in the morning as long as the wind is also favorable.

ANCHORAGE:

We'll be spending Sunday and Saturday night at Dodson Boatyard at Stonington Harbor. You must reserve your own mooring at Dodson. Moorings are \$106.35 per night for boats under 50 feet. And \$132.94 for boats over 50 feet. This includes all shore services including launch, showers, heads, and laundry. Boats may raft but both boats will be charged the mooring fee. Go online to Dodson boatyard

yard and click on reserve a mooring. You will be asked for a credit card but will not be charged until you check in.

Moorings have been reserved. Dodson's has requested that each boat CALL them the morning of arrival at 860.949.5707 to obtain your mooring assignment. Be sure to inform them you are with the BYC cruise. This is an UPDATE to prior instructions of hailing Dodson's upon arrival. In addition, they asked to be hailed on Ch 78 upon your arrival into the harbor. You will be met and lead to your mooring if you do not know it's location or are new to the harbor. If you use the launch service it is customary to tip the launch drivers a dollar or two per trip when you go ashore.

FACILITIES:

Dodson Boatyard has showers, ice, water, fuel, and laundry. The boatyard has the Dog Watch Café Restaurant, the Dog Pound outdoor bar, and a gift shop.

GATHERING PLACE & TIME:

On **Sunday evening** we will have dinner catered by Dog Watch Café. Our dining location will be a Dodson Boatyard building. To reserve a place at the Sunday night **dinner**, select this option on the registration form and the number of dinners that you require.

- **Dinner** will include Dog Watch Salad and Corn Bread, Chicken Piccata, Teriyaki Grilled Salmon with Pineapple, Seasonal Grilled Vegetables and Garlic Mashed Potatoes. The cost of the dinner is approximately \$40 - \$50.00. Cost details still being finalized. In addition, we will provide the complimentary drink of the day which is Grabbers Rum Punch.
- The Children's dinner: Chicken Tenders, Fries, Mac and Cheese and will cost \$17.00.

Reservations were required in advance via BYC Cruise Registration. Please bring your own chairs and tables.

On **Monday**, July 12, you will have the opportunity to tour two historical sites. These include The Captain Palmer House located at 40 Palmer Street and The Lighthouse Museum located at 7 Water Street. Both properties are open from 10 am to 4 pm on Monday. Admission is \$10 for adults for one or both museums.

In addition, we are organizing a lunch at Breakwater Restaurant for the fleet at noon. This waterfront restaurant is located at 66 Water Street. Breakwater features seafood and more with stunning views of the Harbor and Fisher Island Sound. **Reservations were required in advance via the BYC Cruise reservation.** The restaurant has prepared a special menu for us that includes both Light Bites and Entrees. Light bites include salads, calamari, flatbread and fish tacos. Entrees include burgers, fish and chips, steak and salmon. Each table will settle its own bill. Below are samples of some offerings that cost around \$16 plus beverage, tax and tip:

Breakwater Salad with choice of optional fish, chicken or beef protein

Fried Cod BLT

Margherita Flatbread

Classic Burger

NOAA CHART: Block Island Sound, 13205

FURTHER READING: Trip Advisor, Stonington:

<https://www.tripadvisor.com/Home-g33939?fid=2476b16c-ed52-44a6-b281-cdd6aa6b0a52>

Other Activities

Lighthouse Museum 7 Water Street

Schedule Open May 15 – October 15. Thursday – Monday 10am – 4pm

Admission: \$10 for Adults; \$5 for Children 5-17; Members and Children under the age of 5 are free.

Admission grants access to the Capt. Palmer House Museum as well.

Captain Palmer House Schedule Admission: \$10 for Adults; \$5 for Children 5-17; Members and Children under the age of 5 are Free.

Tuesday, July 13, 2021: Mystic Seaport



DAY CAPTAIN(S): Barry and Denise Schrutt, bschrutt@cox.net or dschrutt@gmail.com

Address: Mystic Museum 75 Greenmanville Ave Mystic

Invites you to stroll through their village, climb aboard historic vessels, and explore exhibit halls. Visitors also have the opportunity to enjoy the grounds in the evening. Downtown Mystic, is located just a short walk from the Seaport, offers a variety of dining and shopping

DOCKS ONLY. NO MOORINGS OFFERED OR AVAILABLE. PLEASE PLAN ACCORDINGLY

Dock \$4.50/ft Includes complimentary Museum admission up to #4 guests per boat

Seaport Museum Dock Office #860 572 5391 VHF 71 The Dock office is located on Chubb's Wharf near the Charles W. Morgan 9-5



Reservations through Dockwa let them know we are traveling with the BYC depending on how many boats sign up you may be asked to raft

There are several other Marina's along the river, just to name a few, if you prefer not to stay at the Seaport

Mystic Downtown Marina Dock only \$4/ft
Mystic River Marina Dock only \$3/ft
Mystic Shipyard West Dock only 43/ft
Noank Village Boatyard Mooring \$1.50/ft or dock \$3/ft-3.75/ft

DISTANCE: From Stonington

10.4NM to Noank. Staying at Mystic River Museum it is 2.5NM further up Mystic River.

NAVIGATION:

Exiting Stonington head westerly at the breakwater Green #5 to Stb. Continue to Mason Pt Green #7 Follow to Green #9 to RGMH [Mystic Harbor] Channel is clearly marked. Noank Shipyard is at R #10 continue up Mystic River to #35 Green. The **Mystic Railroad Bridge** opens 40 minutes after the hour when requested. **The Highway Bridge** opens at 20 min past the hour. Both bridges can be hailed on VHF 13 It is a good idea to announce your ETA and request bridge status when 10-15 min away. After passing through **Highway Bridge** at Green #51. Hail Mystic River Seaport Museum VHF 71 Please let them know that you are traveling with BYC

TIDES AND CURRENTS:

July 13, Mystic high 12:34p. Flood starts about 8:10a in Fishers Sound (East to West). Leaving Stonington around 7:00a, you should arrive near 8:30 at the Railroad Bridge (6nm). You will fight a slight current until 8:00. After 8, the flood current will help if you leave later. The flood current will peak in Fishers Sound around 1.6kt near 10am. Due to the need to wait for the bridge, it is recommended to try to arrive near the slack tide (8:30 for an 8:40 bridge opening).

FACILITIES: free wireless internet, electrical power, water, ice, Showers, restrooms

GATHERING PLACE Free night –

FURTHER READING: Mysticseaport.org/visit/mystic-seaport-marina/

Wednesday, July 14 & Thursday, July 15, 2021: Shelter Island Yacht Club, at Dering Harbor



DAY CAPTAINS: Tom Dawson & Greg Aikman tdawsonarchitect@gmail.com or greg.aikman@bnymellon.com

BRIEF DESCRIPTION OF PORT:

Shelter Island is quite beautiful and you are encouraged to walk about and take in the sites and the beautiful residential mansions in the center of town.

On the main street near Piccozzi's Marina, there are several restaurants and places to get food, including The Chequit, The Dory, and the Marie Eiffel Market. Bike rentals are available at Piccozzi's along with maps of the island (*more on that at the end*).

From the Yacht Club, you can walk over the hill to the ferry docks which will take you across to Greenport. The ferry costs \$2, and is a 10-minute trip in each direction. Greenport has shops and restaurants, including the famous Claudio's, which was heavily involved with Rum Running during Prohibition. There are also some big yachts to check out.

Greenport is on the north fork of Long Island, and is well known for several wineries. The vibe in Greenport is more "tourist", while on Shelter it is more "home".



DISTANCES:

Mystic Seaport Museum to Dering Harbor at Shelter Island is approximately **26 nm**.
(Calculated with charts plotting the shortest nautical passage between points - Td).

NAVIGATION:

Low tide on July 14 is 7:03 am at Noank, and the Flood starts at about 8:45am. But Flood starts at The Race at 9:36am. It is best to get to The Race by 9-9:30. With about 11nm from Mystic to the Race, leaving at 7:30 at 5kt would get you there at slack tide. Current will be favorable in Mystic River so you might arrive sooner.

Leaving Mystic Seaport Museum, head back down the marked channel of about 3.0 nautical miles (nm.), and find RG N "MH", directly in front of you leaving the channel, with Ram Island behind that in the distance. Before RG N "MH" turn to the left (*red on top, preferred direction*), look for R N "10" and G C "9", keeping red to your port and green to your right (*exiting a channel, NOT red-right-returning!*). Keep going, passing G C "7A" and G C "7" to your starboard. Now you are between Mason Island to your left, and Ram Island to your right. At G C "7", you are at Waypoint LIS219, a convenient Long Island Sound waypoint if you're using a MapTech Chartbook. (I will mention them, but also give headings).

From G C "7", bear south, heading roughly 170°m., to go about 1 nm. towards Fishers Island; you are now entering Fishers Island Sound. You will pass Gates Island (small) to your port, and eventually Ram Island Reef to your starboard, **which obviously we want to avoid**, and pass it on a long to starboard arc towards LIS079. The next goal is LIS079, also R "20" FI R 4s BELL. **Now is also a really good time to switch to marine radio channel 16, to monitor all out-of-port boating activity.*

Please note the following:

Choosing Fisher Island Sound has **two concerns**: The sound itself has numerous rocks and ledges so carefully read your charts and make sure you know which buoy you are passing. The second concern is when you reach the west end of Fisher Island and head southwest to the G"11", you need to pass

through “The Race”, which is notorious for cross currents, whirlpools and other excitements. Though true, “The Race” is only about ½ nm. wide, and we will be crossing it on a well-established marine navigational route.

From R “20” FI R 4s BELL (LIS079), **head 264°m. for 2.3 nm. to F 94ft 7M HORN (LIS073)**. As you do, Fisher Island will remain at your port side. Approaching the HORN, North Dumpling Island will be to port, with plenty of water depth. From here, next is **head 225°m. for 4.1 nm. to G “11” Q G WHIS RACON (LIS112)**, which will take you along the western shores of Fishers Island. You will also pass Race Rock Light, which will be to port. From G “11”, **head 233°m. for 6.1 nm. to G “1G1” FI G 4s GONG (LIS114)**. From here, **head 254°m. for 5.9 nm. to RW “N” Mo (A) WHIS (LIS123)**, which puts you in a well-marked channel on the north side of Shelter Island into Orient Harbor. From here it’s about 5 nm. to go, as you follow the harbor markers around, at the G”7” turn to port and follow the shore line to Dering Harbor on our port side. Stay well clear of Dering Point on your portside and follow the markers into the harbor. The Shelter Island Yacht Club is on the west side of the harbor.

NOAA CHART

12354

MOORING & ANCHORAGE:

Moorings have been pre-reserved for you based on your registration information. When you enter the harbor, hail the Shelter Island Yacht Club on Channel 74 and inform them that you are with the BYC and have a pre-reserved mooring. Provide them your boat name. They will escort you to your mooring or direct you to your mooring.

FACILITIES:

Launch service is available from the Yacht Club from 0800 to 2200 hours. Shower, ice and trash/recycling are available at the yacht club. Diesel and Gas fuel and pump out are available at Piccozzi’s Marina at the south end of the harbor. Ice at SIYC is \$4 for cubes/\$5 for blocks.

GATHERING PLACE & TIME:

- Wednesday night is a plated 3-course meal, the menu and options for which you have already seen in the registration information. The Shelter Island YC has a dress code: Men should wear dinner jackets on Saturday only; collared shirts are required all other times; please no blue denim attire (men or women); and no hats inside the building. Shoes are also always required.
- Thursday evening is a free night. You can have dinner at the Shelter Island Yacht club, which has a lovely dining room and a selection of dinner options. Please see the dress code, stated above. <https://www.siyc.com/facilities/clubhouse/dining/>. Reservations are recommended. (631) 749-0888.

Shelter Island is great for biking as it's relatively flat and doesn't have much traffic. It's a good way to see some historic homes up close. Greg Aikman did this two years ago and is willing to lead an informal group bike tour on (the second day). Bikes may be rented at Piccozzi's, 77 N. Ferry Road , about a ten

minute walk from SIYC. 4-hour rentals are \$20, 8 hours is \$25. If you are considering this, please bring along your bike helmet.

<http://www.iwpiccozzi.com/details.html#shelter-island-bike-shop>

SIGHTS FROM MYSTIC TO SHELTER ISLAND:

On our way from Mystic to Shelter Island, we will pass by the east end of Fisher Island. As we transition from Block Island sound to Gardiner's Bay, you will see Little Gull Island to Starboard.

Little Gull Island is a small island owned by Fred Plumb, a CT businessman who wants to restore the lighthouse.

Great Gull Island is next, 17 acres in size. This is a major stopover for birds. The tern bird population is now one of the largest in the world.

In 1897 Ft. Michie was constructed to defend the sound with one of the largest gun installations in the USA. Its military base was operational from the Spanish American War through WWII. The American Museum of Natural History acquired the island in 1949.

We will then pass the northern tip of **Gardiner's Island** to port. Gardiner's Island puts the 'Olde' in 'old money'. The Gardiners were granted the island by King Charles II, and played both sides of the Revolutionary War. Offspring were sent off-island to marry. According to the *Daily Mail*, "...the six-mile-long private paradise sits at the center of a windswept bay between Long Island's North and South Fork, making it only accessible by boat. It boasts 27 miles of untouched coastline, jagged cliffs, pristine beaches, rolling meadows and a rich family history that predates the founding of America itself. Gardiners passed down through the Gardiner family for 380 years, it is America's oldest family estate that has fascinated people with its shroud of mystery.

Its colorful past is as long as it is varied – with stories that sound more like fairy tales than textbook histories: in 1699 Captain Kidd buried treasure in its densely packed woods, First Lady Julia Gardiner Tyler was born in 1820, and in 1966 Jacqueline Kennedy Onassis was accused of stealing a solid gold lighter at a glamorous dinner party hosted by Robert Gardiner.."

<https://www.dailymail.co.uk/news/article-6878015/Gardiners-Island-mysterious-private-island-owned-family-380-years-Hamptons-Captain-Kidd.html>

As we arrive at the G1G off the tip of Gardiner's Island, directly to starboard, you will see **Plum Island**, a US Federal Research facility dedicated to the study of animal disease. There is a theory that an accidental release of infected ticks during experiments produced Lyme disease, first discovered in Lyme CT., 8 miles north.

Dead ahead you will see **Shelter Island** of which one third is owned by the Nature Conservancy. The island is 27 square miles, with half being water. 2,228 people live on Shelter year-round. In the summer there are 8000 residents. At the time of the European encounter, the island was occupied by the Manhasset tribe, related to the Pequot tribe. The original name of the island means island sheltered by islands.

This island was part of the original Plymouth Company land grant made by James I of England. In 1652 Nathaniel Sylvester constructed the first house for his bride, Grissel. She had a sister Anne who married William Coddington, the Governor of Rhode Island. Sylvester was part of the Triangle trade between the American colonies, Africa and England. Notable people from Shelter Island include:

Julie Kavner, the voice of Marge Simpson
Itzhak Perlman, violinist and Grammy Award Winner
Leon Uris, novelist.

Friday & Saturday July 16 & 17, 2021: Three Mile Island



DAY CAPTAIN(S): Larry and Laura Tambascio larry@tambascio.net and laura@tambascio.net

BRIEF DESCRIPTION of PORT of CALL:

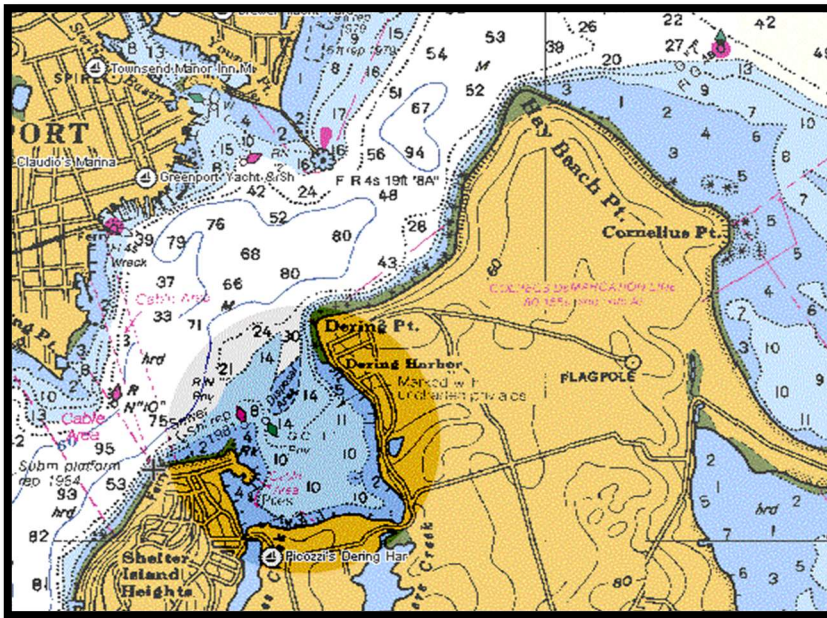
Three Mile Harbor Three Mile Harbor is conveniently located between Sag Harbor and Amaganset. This beautiful harbor is East Hampton's most popular port with access to marinas, anchorages and more. The harbor is well protected and offers a beautiful natural anchorage. The harbor is extremely long and very shallow along the west side of the channel. More information on navigation is below.

DISTANCE: From Dering Harbor approximately 10 nm

NAVIGATION:

Three Mile Harbor inside anchorage is latitude is 41 degrees 2.274 North and longitude 72 degrees 11.384 West.

From Dering Harbor Buoy 1 (Green) to starboard entering the main channel the route proceeds clockwise heading northeast around the tip of Shelter Island and then southeast along Shelter Island to the entrance of Three Mile Harbor. Head for Green "7" then to Green "3". Stay well to the north of the shore heading to the entrance of Three Mile Harbor.

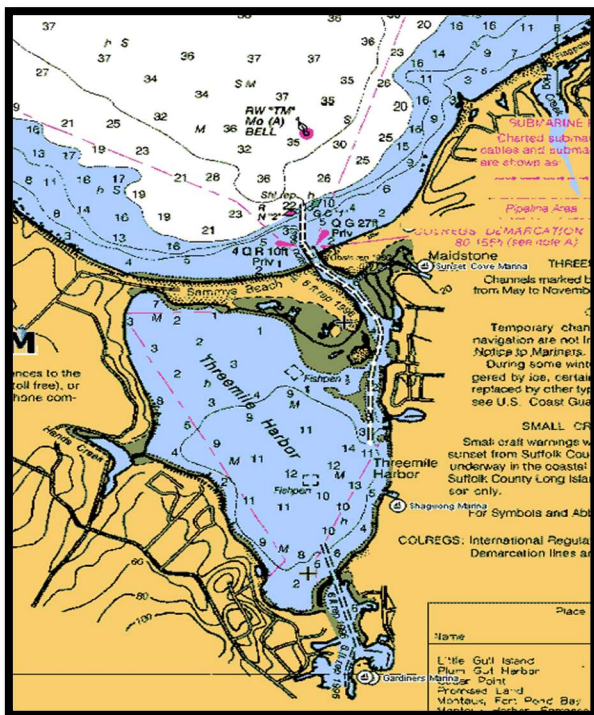


Approaching Three Mile Harbor

Three Mile Harbor Entrance Buoy 1 (Green) and Red lateral buoy (nun) "2".

The waters outside Three Mile Harbor are open and deep. In approaching the channel, the depth drops off significantly outside the channel. There is a red and white mid channel marker approximately half a mile from the entrance to harbor indicating the channel. Outside the channel near the beaches, the water is approximately 4-5 feet deep. There

is a public beach and jetty located on the eastern side of the channel. There is enough depth on the western side for some boats to anchor, but it may be very rough with all the traffic from local boats.



To enter the harbor, pass through two jetties to access the inner harbor. The channel is narrow with a current that will either help or hinder your entrance to the harbor.

Inside the Harbor

Once inside the jetties the channel is well marked with red and green buoys. Stay in the channel. The channel is dredged every few years and can accommodate large vessels. These channel markers are privately maintained from April through November.

MOORING & ANCHORAGE:

At Three Mile Harbor, BYC boats will be anchoring inside the harbor. The anchorage area is located on the starboard side of the harbor as you enter (west to northwest side of the harbor). The anchorage area

inside Three Mile Harbor offers plenty of depth and swing room. There is a sand and mud bottom offering a good holding ground.

To access the anchorage, follow the channel deep into the anchorage. There is a large sandbar along the western side of the channel. The sandbar begins approximately half a mile inside the entrance. You will

not be able to pass over this sandbar. At the northern point of the sandbar the depth is only a few inches at low tide. To access the anchorage area, continue pass Green 19 and a private Green in the channel and continue well beyond the private marker prior to turning into the western section of the harbor. Pay close attention to the chart and depth.

Once inside the anchorage you will find an ample amount of water with a good holding ground for anchoring. There is a water ski area where you cannot anchor and should avoid due to boat wakes. The northern and northwest corners of the anchorage area become very shallow (3-5 feet), so larger vessel will want to stay in the middle of the anchorage.

FACILITIES:

The East Hampton Harbormaster has free pump out service and fuel at Green 19. Call the Harbormaster on pump out boats on VHF channel 9. Phone number is 631-329-3078. There is also a free pump-out boat Thursday – Monday beginning at 9:00am.

Three Mile Island Marine Services: <https://www.tmhmarina.com/>

GATHERING PLACE & TIME:

BYC will assemble on Sammy’s Beach at 6:00 pm. BYC will provide the drink of the day which will be Sangria. Please bring pot luck appetizers to share, tables and chairs.

On Saturday, July 17 there are fireworks!

Check out: <https://www.clamshellfoundation.org/fireworks>

TIDES AND CURRENTS:

The low tide at the harbor entrance is at 9:31AM and the high will be at 3:06PM.

FURTHER READING:

For more detail see: <https://atlanticcruisingclub.com/Articles/20>

Sunday, July 18, 2021: Block Island



DAY CAPTAINS: Steve and Nancy Barron, Morgan 38cc, "*Blessings*" sbarron0724@yahoo.com

DISTANCE: From Three Mile Harbor to Block Island (33 nm)

BRIEF DESCRIPTION OF PORT OF CALL:

Block Island is located off the coast of Rhode Island, approximately 14 miles (23 km) east of Montauk Point, Long Island, and 13 miles (21 km) south from mainland Rhode Island, from which it is separated by Block Island Sound. It was named after Dutch explorer Adrian Block.

Block Island has no natural harbors. Breakwaters were constructed in 1870 to form Old Harbor on the east side of the island. New Harbor, with its entrance on the west side of the island and where we are gathering, was created in 1895 when a channel was dug to connect the Great Salt Pond to the ocean through the land.

The Block Island Wind Farm is the first commercial offshore wind farm in the United States, located 2.8 miles SE of Block Island. The five-turbine, 30 MW project was developed by Deepwater Wind. Construction began in 2015 and in late summer 2016 five Alstom Haliade 150-6-MW turbines were erected. Operations were launched in December 2016. It is the largest project using wind power in Rhode Island. A portion of the power is supplied directly to Block Island which had some of the highest power rates in the country due to its local generation by small diesel-powered generators. Power costs on the island are predicted to be cut by 40%.

NAVIGATION:

Leaving Three Mile Harbor, it's about an 8 mile course from RW Bell "TM" outside the harbor following around the channel past Lionhead Rock (C"13") past the shoaling south of Cartwright Is (the small sand strip extending from Gardiners Is) and passing N"8", N"6", N"4", N"2" out to RW Bell "S" by Goff Pt. Pay attention to the marked channel in this area as there are several shoal areas under 5'.

From the RW Bell "S", its 8mi on a course of 066m to the buoy at Shgwong Reef G Bell "SR".

It's recommended to leave Shagwong Reef (G Bell 7"SR" Fl G 2.5s Bell buoy, 41-07-02.223N, 071-54-49.540W) off your starboard, giving the 6' and 12' shoals their due, while also staying out of the stronger tide rips that run around the end of Long Island.

Once clearing Shagwong Reef, it is a straight 15.4mi shot of 086m degrees and open water to the entrance of the Great Salt Pond on Block Is. In reduced visibility, be alert for traffic along this course as it's the direct route between Montauk area harbors and Block Is.

Make note of the currents and possible set of your course depending on your time of passage (per Eldrige):

When approaching Block Island from ~ 3 Mile Island, from the WSW as we will be, Block Island will likely first appear as two islands with the north elevations being ~100' above sea level and the southern end being the taller, ~150'.

On the northern most end of the island, Sandy Point, is the North Lighthouse w a Fl 5s light with a height of 58ft. Approaching from Montauk, the Block Island Southeast Light is also visible on the far side of the island, given its height of 261' w a Fl G 5s light visible for 20 miles and a horn every 30s when visibility is reduced.

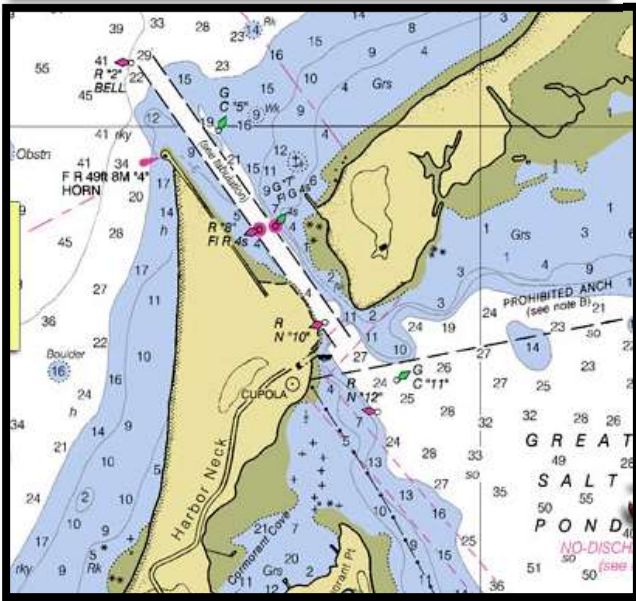
Entrance Bell buoy R"2" (41-12-05.370N, 071-35-39.027W) marks the entrance channel to the Great Salt Pond (also called New Harbor) and is ~1.75 NM south of the North Lighthouse on Sandy Point (Built in 1867).

At the entrance on the end of the breakwater there is Breakwater Light "4", a 49' skeleton tower R"4" with a flashing red light visible for 8 NM also equipped with a HORN every 10s in reduced visibility. (To activate horn, turn VHF to Ch 83A and key your microphone 5 times consecutively which will activate the horn for 60 min.)

The entrance to Great Salt Pond is straight forward however the channel can be very crowded with traffic. Note that the channel runs parallel to the jetty but not right adjacent to it. Line up R"2", R"8" and R"10" to stay in the fairway.



THE HARBOR IS A STRICTLY ENFORCED NO DISCHARGE ZONE!



TIDES AND CURRENTS:

July 18: Block Is High Tide 3:07PM, Low Tide 9:51pm
 July 19: Block Is High Tide 3:27AM and 4:13PM, Low Tide 9:16AM

MOORINGS AND ANCHORAGE:

Upon arrival into the Great Salt Pond (requested no earlier than around 1pm) arrivals should contact the Block Island Harbormaster on VHF channel 12, identify themselves as being members of the BYC cruise and ask for a mooring assignment.

Should you decide to anchor, note that The Great Salt Pond has notoriously poor holding ground. Its recommended if you do anchor to use a Danforth type anchor in the center harder bottom areas and a plow around the edges in softer areas and use plenty of scope (easier said than done given the summer crowds using the anchorage). The far eastern side of the pond is said to have lots of oyster shells and a submerged water supply line, both making it a poor location to attempt to anchor. Note to the prohibited anchorage area in the northern quarter of the pond

FACILITIES:

<http://cruising.coastalboating.net/Destinations/NE-US/Islands/BlockIsland/Boat-Crew.html>

Holding Tank Pump Out

Champlin's onsite on call. Efficient high-speed pump-out via 3 boats on ch 73. Tips appreciated.

Dinghy Docks

1. At Champlin's Marina
2. At the Block Island Boat Basin, near the Oar restaurant, however one can only use the on-land side where I'm told low tide makes it interesting.
3. At the new Town docks, in the SE corner of the harbor between Payne's and Dead Eye Dicks

GATHERING PLACE & TIME:

Sunday's group dinner is at Dead Eye Dick's restaurant. There will be two seating times (5:30 and 6:30pm). Dead Eye Dick's is just south of Payne's Dock in New Harbor/Great Salt Pond.



The best dinghy dock is the new dinghy dock on the channel into the "Hog pen" in the SE corner of the harbor. The dock is located between Payne's Dock and Dead Eye Dick's restaurant. It is the new town dinghy dock.

Possible activities if arriving early Sunday or staying Monday:

1. **Quahog adventure:** Dig for quahogs. Low tide on Monday is around 9:15am. See the link for BI shellfish regulations (<http://www.new-shoreham.com/docs/ShellfishBroch.pdf>). Go to the harbormaster shack at 9 am (that's by the west side of the boat basin - the Oar), with photo ID and \$20 or \$10 (over 65), to get the required shellfish licenses (made up in the shack with photo) and then proceed to flats (areas 2 and 3 on map). We should be able to find quahogs of appropriate size. You can just use fingers and feet, but rakes are ok too.
2. **Block Island Taxi Tour** Perhaps the best way to learn the most about Block Island in the least amount of time is to take in the sights with a narrated taxi tour. There are no tour bus or trolley companies on the island, so a "taxi tour" is the way to go.

In just about an hour's time, you will travel the entire island, from the granite North Light overseeing the Block Island Wildlife Refuge at the northernmost point to the stunning Mohegan Bluffs, rising 150 feet above the sea below.

Many of the drivers are long-time island residents, so you'll learn the all about the island of today and yesterday, while getting the inside track on where the locals like to eat, drink, shop, fish and enjoy sun and surf. Most Block Island taxis fit between 8 and 11 people, so no worries if you're with a group. You can go to the Taxi Stand at Old Harbor to grab a cab, or call a taxi to pick you up. For a list of taxi companies and phone numbers, go to <http://www.blockislandinfo.com/what-to-do/tours/tours-by-land> .

3. *Abrams' Animal Farm* A collection of exotic and domestic animals is maintained by Justin Abrams, owner of the 1661 Inn & Hotel Manisses. The small hobby farm between Spring and High streets is home to llamas, emus, sheep, donkeys, goats, swans, ducks, even camels on the hillside meadow south of the hotel. Feed is available for the hungry goats and emus. No charge and accessible from dawn to dusk. Spring Street. Phone: 401-466-2421
4. *Horseback Riding. Rustic Rides Horse Farm*, 1173 West Side Rd, New Shoreham, RI 02807. Guided trail rides to the beach and nature preserve. Ages 4+, no experience needed. (401) 466-5060 for reservations
5. *Pond & Beyond Guided Kayak Tours* Daily eco-tours, kid programs, family tours, groups, full moon paddle, sunset paddle, women only. Instruction for beginners. Tour reservations recommended. Experience the island via kayak, guided by an islander—a naturalist. Various boat styles available including touring boats by Perception and Wilderness, kid-size boats and tandems. Tours approx. 2 hours on the water. Custom tours available. Located on Ocean Ave. at Smuggler's Cove. corrie_estelle@hotmail.com. Phone: 401-578-2773
6. Also *Fort Island Kayaks* Offering single and tandem kayaks, and rental snorkeling gear. Call for reservations and information. Ocean Ave, next to the bridge in New Harbor. Phone: 401-466-5392
7. *Historical Society Museum* Interesting exhibit of artifacts from the farming and fishing period to the rise of tourism in the Victorian era. The featured summer exhibit is "Block Island Idyll: Memories of Manisses." Also "Sperry Andrews: Paintings of Old Block Island." Ask about guided tours of the Island Cemetery, Old Harbor area and Native American sites. Old Town Road. Open daily 11 a.m. to 4 p.m. Admission \$6, seniors and students \$4, children free. blockhistory@me.com. Phone: 401-466-2481
8. *Island Bike & Moped* Behind the Harborside Inn selection of rental bicycles and new model mopeds, mountain bikes, beach cruisers, tandems and tag-alongs. Six-speed Jamis Boss Cruisers and 21-speed mountain bikes are for rent. Children's seats, helmets and eye protection are available. 8 a.m. to 7 p.m. daily. Located at Chapel Street, just off Water Street. Phone: 401-466-2700. Also, *Moped Man and Old Harbor Bike Shop*. Water Street, across from the ferry. 401-466-2029
9. *Historic Empire Theater* <http://www.empiretheaterblockisland.com/> Evening and rainy-day matinee movies. Built in 1882 first as a roller-skating rink and then in the 1890s converted into a theater, and now serves as the island's movie theater with occasional playhouse productions. 17 Water St.
10. *Block Island Maritime Institute* <http://bimaritime.org/our-mission/>.
11. Tour aboard an Oldport Marine's launch and get some little-known facts about the history, folklore and ecology of Block Island's treasure – The Great Salt Pond. \$20 pp. MUST call 401-500-3501 to reserve a spot Many other programs, several oriented for children: <http://bimaritime.org/for-early-learners/>
12. *Visit/hike Mohegan Bluffs and the Southeast Lighthouse:* The Mohegan Bluffs are large clay cliffs about 150 feet high, located on the southern shore of Block Island. These cliffs are a beautiful site, and can be observed from the top, where visitors can look out for miles on the Atlantic

Ocean or visitors can climb down the steep staircase of over 100 steps and view them from the beach (also known as Corn Cove). Through the years, the Mohegan Bluffs have eroded about 250 feet, and because of this, the Block Island Southeast Lighthouse had to be moved back about 360 feet to keep it from tumbling into the ocean. NOTE Southeast Lighthouse is undergoing repairs and while it can still be visited, one cannot climb the tower.

13. *Hiking on the Island (and Blown Glass Art Globes treasure hunt):*

<https://www.trails.com/us/ri/block-island/the-greenway> Explore and find one of more than 500 glass orbs around Block Island's greenways which Artist Eben Horton famously hides each summer in a project that's half treasure hunt, half conservation education.

Island Restaurants

<http://cruising.coastalboating.net/Destinations/NE-US/Islands/BlockIsland/Dining.html>

NOAA CHART:

Block Island Sound and Gardiners Bay #13209_1
Block Is Sound, Pt Judith to Montauk Pt #13215_1
Block Island Sound and Approaches #13205
Great Salt Pond #13217