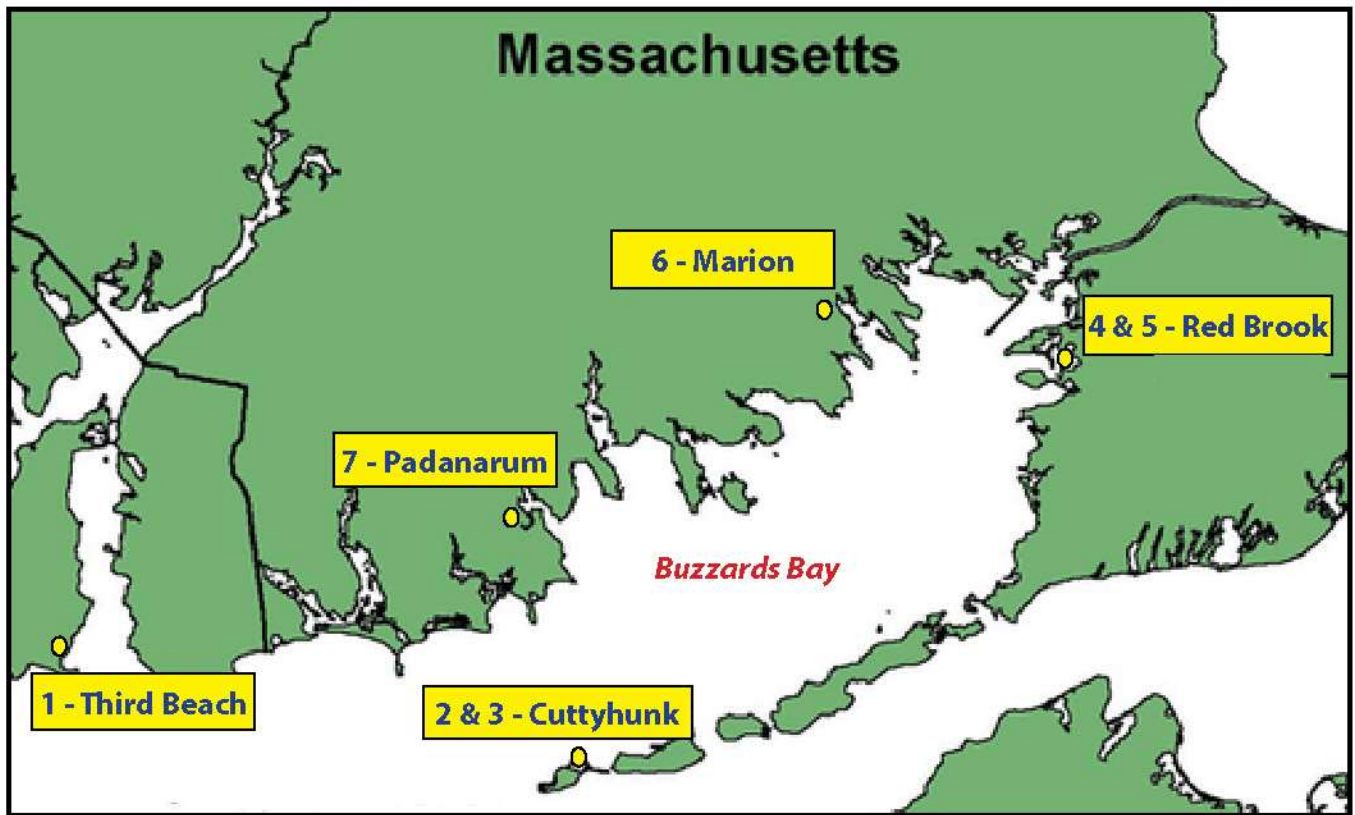




BYC Summer Cruise

August 1 - 8, 2020



General Information

Day	Date	Port	N.Miles
1. Saturday	1-Aug	Third Beach	16
2. Sunday	2-Aug	Cuttyhunk	15
3. Monday	3-Aug	Cuttyhunk	0
4. Tuesday	4-Aug	Red Brook - Parker's Boatyard	23
5. Wednesday	5-Aug	Red Brook - Parker's Boatyard	0
6. Thursday	6-Aug	Marion - Beverly Yacht Club	9
7. Friday	7-Aug	Padanaram - NBYC	18
8. Saturday	8-Aug	Bristol	31

*Note: All distances are approximations

Communication

The Fleet and Day Captains will monitor VHF channel 72 for official cruise business throughout the cruise, from sunrise to sunset. You may call Fleet Captain, Brad de Wolf by mobile phone at 401-545-0044 if you need immediate assistance. There will be a daily check-in, initiated the day captain of that port at 0800 on Channel 72 to review current conditions, any last-minute sailing and evening activity updates and to answer questions. If the departure time is earlier than 8:00 due to tides, etc. the new call time will be announced the evening prior.

If you decide to not go to a port that you signed up for please make sure you notify either the Fleet Captain or the Day Captain for that port.

Flags

Please fly your Bristol Yacht Club burgee night and day so that other boats in the cruise can recognize you. Other signals may be flown at each skipper's discretion.

Navigation meetups

Skippers interested in discussion of the next day's course options inform the day captain for that port and they will review with you or ask someone else to assist. There will be a brief review of the course and any special conditions to be aware of on the daily 8:00am call.

Evening Activities

Highlights of evening activities are listed below. Further details are available in the Gathering section of the specific port.

Masks will be required on land at all locations and at the events except when you can maintain at least 6 ft. distance between other members.

Port	Gathering Spot	Time	Libations & Food	What to Bring & Info
Third Beach - Saturday	Picnic Area on Beach	6:00 PM	Snack Bar, BYOF & BYOB	Let Glen (glenpetaja@gmail.com) know if you are interested in food from the snack bar – A few picnic tables will be available. Bring chairs
Cuttyhunk - Sunday	Beach along channel	6:00 PM	BYOB & BYOF	On Beach – Bring Chairs
Cuttyhunk - Monday	Cuttyhunk Fish Farm	6:00 PM	Catered Dinner	Libations and cup – Jayne will share more about seating setup
Red Brook – Tuesday	Free Night			You can make reservations in advance at the Chart Room Restaurant. They also do take-out. There will be a BBQ and tables setup at Parker’s that you can use.
Red Brook – Wednesday	Parker’s Boathouse Picnic Area	6:00 PM	Catered Dinner BYOB	There will be some tables, but will be helpful to bring any tables or chairs you might have aboard
Marion – Beverly Yacht Club - Thursday	Free Night			Restaurants in town listed in Marion/Beverly Yacht Club section - Facilities
Padanaram – New Bedford Yacht Club	Dinner on the Lawn at NBYC provided by their restaurant	6:00 PM	Drinks and Dinner at NBYC	Contact Denise Schrutt at dschrutt@gmail.com to reserve a table for dinner

2020 Ports of Call

Saturday, Aug 1st – Third Beach



Third Beach, Newport. Photo Cate Brown

DAY CAPTAINS: Glen and Marsha Petaja **“SISU”** – Glen 401 3966678

DISTANCE: From prior nights port of Bristol (18NM)

BRIEF DESCRIPTION OF PORT: If you’re looking for fine sand and calm water, this is your beach! Located at the mouth of the Sakonnet River (technically part of Narragansett Bay), Third Beach is protected by Sachuest Point from southwesterly breezes. It’s a great spot for paddle boarding, sunbathing and swimming, and you can stretch your legs in the Sachuest Point Wildlife Refuge or on a short stroll to Second Beach.

On most days the southwest wind fills in strongly in this area in the morning and blows briskly throughout the afternoon, producing strong waves, so be prepared for this when planning your trip.

NAVIGATION: The shortest sail to Sakonnet Harbor or Third Beach takes you under two bridges and down the Sakonnet. From the Club, sail between Hog Island and Bristol, then turn to port under the Mount Hope Bridge into Mount Hope Bay. Sail east, turning to starboard around Common Fence Point. Then sail south under the new Sakonnet River bridge, and through Tiverton Harbor and the “old stone bridge” remains then south to Third Beach.

Chart 13226 Mt. Hope Bay RI-MA

The primary navigational issue on this leg is the strong currents in the Sakonnet River in the Tiverton area where there are two narrow spots caused by the remains of old bridges. The first one is just north of the new Route 24 Bridge. The second is the remains of the “Old Stone Bridge” which is 0.8 nautical miles south of the new bridge.

Friday July 31, and Saturday Aug 1, you can expect a strong ebbing (south flowing) current from about 08:00 to 11:00 hours. It is not a problem as long as you are aware of it. It is recommended that you start your engine to help keep boat speed (through the water) high enough to assure good steerage in this area.

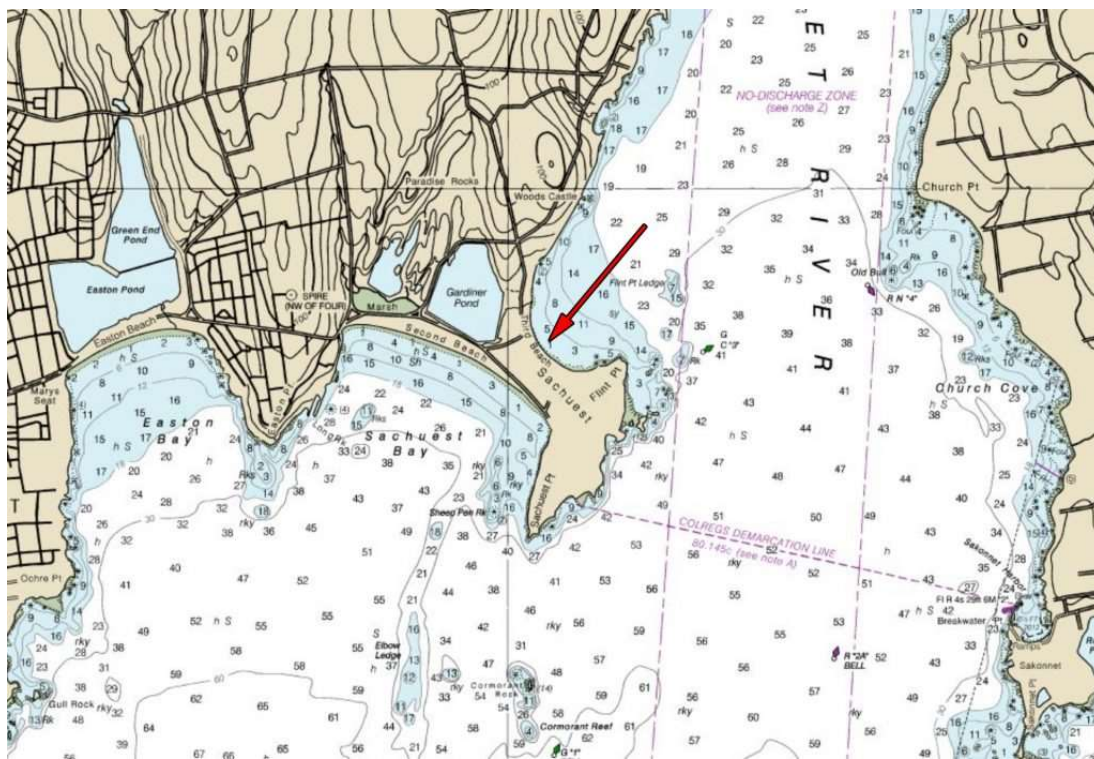
Once you are south of the old stone bridge remains it is best to stay in the channel and East of Gould Island.

The river is wide here but shallow in the northern part. You do not have to stay in the channel, but you must keep an eye on the chart. Once you are south of Fogland it opens up. Third beach is just west of Flint Point. It is a wide sandy beach running west and then north from Flint Point. More information on what area to anchor in will follow.

TIDES AND CURRENTS: At the “Old Stone Bridge”

July 31 high 5:44am, low 11:10 am

Aug 1 high 6:42am, low 12:01pm



MOORINGS:

Approach the beach and look for an open town mooring (first-come, first served) or anchor to the north and east of the mooring field. Stu Braman is the Harbormaster (401-835-6664). The moorings cost \$20, cash only, and he will come around to find you. It is recommended that you **do not raft up** in this anchorage due to often present swell in the

anchorage. We will most likely anchor north of the mooring field off Peabody's beach club. This may change depending on weather conditions. The hold ground is generally good but make sure you set your anchor well.

FACILITIES: There are no facility at third beach other than Porta-Potties in the beach parking lots and there is sometimes a Dells truck in the eastern most parking lot.

Third Beach is a popular family beach because is north facing and normally will not have any wave action. If you are looking for a "Ocean" beach with waves, Second Beach is a short walk (about .25 miles) south.

GATHERING PLACE & TIME: We will be gathering on the beach for drink and food at 6:00pm. Due to COVID restrictions this will be BYO everything. Look for the BYC burgee which will most likely be at the northwest end of the beach near if not at the beach club. We can use the Peabody's Beach Club facilities and let Glen know if you are interested in the snack bar food and drinks at glenpetaja@gmail.com

Sunday, August 2nd and Monday, August 3rd – Cuttyhunk



DAY CAPTAINS: Bob & Jayne Magown – “INFINITY” Bob 781.718.9048 Jayne – 617.448.7909

BRIEF DESCRIPTION OF CUTTYHUNK: Located at the bottom of the chain of the Elizabeth Island between Buzzards Bay and Vineyard Sound, Cuttyhunk has long been known as a quiet fishing destination. Many families have long summered on Cutty with the original families going back several generations. Today Cuttyhunk offers a spacious marina, moorings for rent both inside and outside the harbor, a few stores for basic provisions, US Post Office, and a stretch of fish mongers located on the town dock. This dock is a great place for a traditional fish dinner, oysters, clams, lobster, chowder among other delicacies. Ice cream is also available for a few short hours in the later afternoon and early evening. Key to a fun trip to Cutty is be bring what you need but don't miss the Raw Bar and dockside eateries. Church's Beach is a short walk out of the harbor which on the way brings you past the Cuttyhunk Yacht Club.

DISTANCE FROM THIRD BEACH: Cuttyhunk is 19 nm from Third Beach. Weigh anchor, enter Sakonnet River and head for the outside of Sakonnet Light. Definitely respect all navigational aids around the Light unless you have specific local knowledge. Cutty is practically one tack across Buzzards Bay in prevailing south westerlies.

NAVIGATION INTO CUTTYHUNK: Arriving outside Cutty you will find the outer mid channel marker. Passing on either side is fine. Turning to starboard brings you into the outer Cutty Harbor. Respect nav aides as there are rocks to starboard, some not marked. Entrance to the inner harbor is well marked by

a large day marker. There is also the bell marker at end of channel. Proceed into harbor at mid channel as outside the channel the bottom comes up quickly.

TIDES AND CURRENTS: High tide at Cuttyhunk on 8/2 is at 8:53am, Low is at 2:47pm. Current in and out of harbor is 1 to 2 knots. Lowest depths 8' to 9' at low tide.

ANCHORAGE and MOORINGS: There are 50 town owned moorings inside the harbor, first come first serve. Rafting up to 3 vessels is permitted. Fee is \$45 per vessel, not per mooring. There are moorings outside harbor first come first serve as well as plenty of anchorage space. Inside the harbor is a small area in the NE corner for anchoring. SMALL being the operative word. Be sure to leave enough swing room and get there early if you want to anchor as it fills up quickly. There is also dock space available from Cuttyhunk Harbormaster. Contact harbormaster on channel 9 or in advance at 508.971.1388. Either George Isobel or Angus Garfield can help you.

FACILITIES: There are restrooms but no showers available in the harbor. They are open 24/7. There is NO FUEL sold this summer in Cutty due to tank replacement. There is water and self-serve pump out on the fuel dock.

There are shoppes on the dock selling fresh seafood, ice, ice cream and bait.

Raw Bar Boat comes around every evening at 5pm to both inner and outer harbor mooring and anchorage fields. There is one small grocery up the hill, a few t shirt and souvenir vendors on island. Great island for walking but respect islander's homes. Walking up the big hill to the lookout tower is a must on Cutty. The panoramic views of the South Coast of MA, Buzzards Bay, Martha's Vineyard all the way to Block Island and Newport are available from this elevation. There are also walking trails accessible from this location. Bring your bug spray if you decide to go hike on one of the trails. See website for more information: <https://www.savebuzzardsbay.org/places-to-go/lookout-park/>

GATHERING PLACE & TIME:

Sunday evening, August 2nd, we are planning a BYOF & BYOB bonfire gathering at the beach along the channel. Bring chairs too! More information will be shared on the VHF daily calls.

August 3rd – Dinner catered by Cuttyhunk Shellfish Farms. Picnic tables will be setup in their outdoor dining area. Bring your own libations and cups. More information will be available from Jayne as she finalizes seating with CSF. The meals can be pre-packaged and available to take back to your boat if you prefer to dine onboard. We will get a count of people who would like to do that prior to the evening.

August 3rd - Possible outing to Penikese island. More info to follow from Brad.

NOAA CHART: 13230

ADDITIONAL INFO: EVERYONE is expected to follow mainland Covid 19 protocol. This includes wearing masks when ashore at all times unless seated for food service. Observe 6' social distancing when ashore as well. They are allowing bonfires and gatherings on the beach with social distancing practices in place

Tuesday, August 4th – Wednesday, August 5th Red Brook Harbor,
Parker’s Boatyard



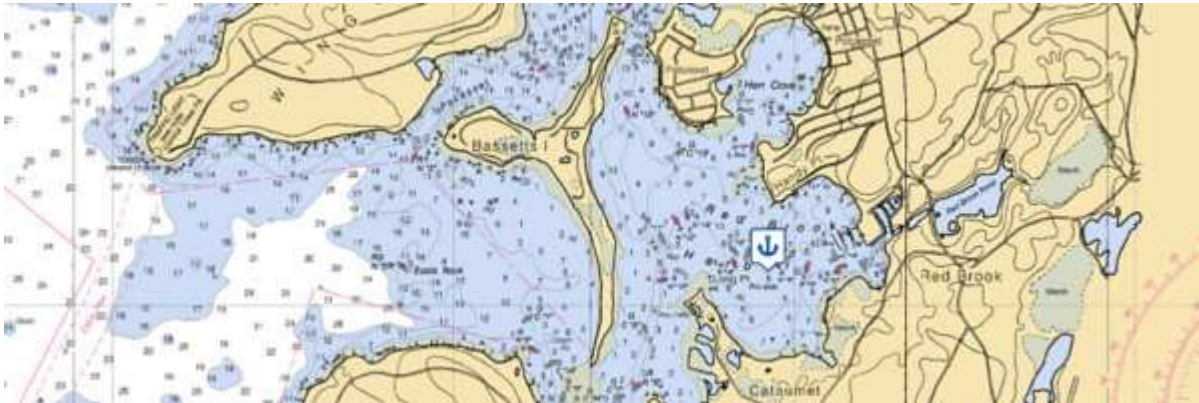
DAY CAPTAIN(S): Thomas A. Dawson, & Lee H. Dawson – *“Shearwater”*
Tom: 508-498-7335 Lee: 508-308-6979

BRIEF DESCRIPTION of PORT of CALL: Bassetts Island & Red Brook Harbor - The adjoining harbors of Pocasset and Red Brook Harbor in the northeastern corner of Buzzards Bay are among the most beautiful natural harbors in New England, and offer great shelter and an ideal layover for those planning transit through the Cape Cod Canal.

Bassetts Island is nearly deserted, and the southern portion of the island is owned by the town (Bourne). The island’s beaches make a good destination for dinghy exploration. (Note that the northern part of the island is private.)

The mainland shores are similarly attractive and lightly developed. Within a mile of the harbor, the Bourne Conservation Trust controls nearly 100 acres of woods and fields, connected by a network of trails. You can pick up a trail guide from the office at Parker's Boatyard.

DISTANCE FROM CUTTYHUNK: Roughly 23 nautical miles, from leaving Cuttyhunk. Sail time is about 5 hours. High tide on 08/04/20 is listed as 9:22 am, transitioning to a low tide at 2:53 pm. IT'S ADVISABLE TO LEAVE Cuttyhunk EARLY, say by 6:30 am, putting you in Red Brook at lunchtime, and only 2 hrs. into an ebb tide.



NAVIGATION: Red Brook Harbor is well protected by Bassetts Island with its wonderful sandy beach. However, it takes approximately 25 minutes to reach it from Buzzards Bay at the required No Wake Zone speed using either the north or south access channels (both of which are well marked) around Bassetts Island. Most large boats use the south channel with a reported minimum depth of 6 feet. **Our fleet suggestion: USE THE SOUTH.**

Pocasset and Red Brook Harbors share a common entrance between Scraggy Neck to the south and Wings Neck to the north. Bassetts Island separates Pocasset Harbor from Red Brook Harbor. Broken ground with depths of 17 to 19 feet in places extends across the entrance. Eustis Rock, about 0.2 mile north of Scraggy Neck (N41°40.45'; W070°38.80'), is covered 5 feet and marked by a buoy. This is the turning point to both harbors. The area eastward of Eustis Rock to Bassetts Island is shoal.

A narrow-buoyed channel, with a depth of about 8 feet leads north of Bassetts Island to Pocasset Harbor. Barlows Landing, at the northeast end of the harbor, has a depth of 11 feet. A small-craft launching ramp is just south of the landing.

Hospital Cove, about 0.2 mile southward of the southern end of Bassetts Island, is entered through a natural buoyed channel that leads southeastward from a point about 0.4 mile east-southeastward of Eustis Rock to a small anchorage in the cove. A depth of about 6 feet can be carried in the channel, and there are depths of 8 to 14 feet in the anchorage. A shoal at the south tip of Bassetts Island is reported to be shifting westward in the vicinity of Buoy 3; so stay mid-channel and exercise caution. A boulder

reef extends northeastward from Scraggy Neck in the approach to the cove. Several private piers with depths of 5 to 8 feet alongside are in the cove.

Red Brook Harbor, east of Bassetts Island, is approached from the northward through the channel that leads through Pocasset Harbor, and from the southward through the channel that leads through Hospital Cove. Hen Cove is immediately northward of Red Brook Harbor. The channels are buoyed. Depths of 8 feet and 6 feet can be carried through the north and south channels, respectively. Because of numerous submerged rocks in and near the edges of the channel, local knowledge is advised.

See below for detailed directions from Cutty to the Parker Boatyard in Red Brook

- Head East into the channel between CH Island on your right, and Copicut Neck on your left, this channel leads to CH Harbor;
- Pass CH north jetty on left, GC "9" on your right, then R "6" BELL on your left, and Pease Ledge beyond, on left;
- Head up northeast into CH Harbor: Nashawena Island on your right, heading toward GC "1E" to starboard, and RN "2E" to your port side;
- (My navigation now takes you north, to the "recommended vessel route", for deep draft vessels, but you may choose to parallel this route, to the south, deemed the Cleveland Ledge Channel). Please note General Anchorage areas "L" & "D", as well as other noted regions through Buzzards Bay south, if you chose your own route.
- With RW "CH" Mo (A) BELL to your starboard, head north to R "8" FI R 2.5s GONG, where you will enter the channel, previously mentioned;
- Turn right, heading northeast, toward RW "BB" Mo (A) BELL;
- Stay in the channel, with charted depths of low 40's to upper 40's, and some 50' depths: pass G "9" FI G 4s BELL, then R "10" FI R 4s GONG;
- Then turn slightly left (northward), heading to R "2" FI R 4s BELL;
- Then look for G "3" QG to port, & R "4" QR to starboard, directly opposing: pass between them;
- Passing through Cleveland Ledge to port, and Cleveland East Ledge to starboard, pass R "6" FI R 2.5s, & FI 10s HORN RACON;
- Pass G "7" FI G 4s GONG to port, and R "8" FI R 4s to starboard;
- Depart the Cleveland Ledge Channel, (if using) turn right bearing due East, with RN "2" to your right, Scraggy Neck will be ahead and to the right;
- Approach with RG N "ER" Eustis Rock on your left, Bassetts Island (southern neck) is dead ahead;
- See the start of the channel, that will loop you down and around the neck: GC "1" should be to your port side, then RN "2", pass it on your starboard; then GC "1A", GC "3", GC "5", then RN "6", GC "5A", GC "7", then RN "8", GC "9", and RN "10".
- You're now entering Red Brook Harbor, so follow the channel markers closely in; proceed to GC = green cans 11, 13, 17, 19, & 21: as also RN = red nuns 12, 14, 16, 18, 20, & 22. Remember: "red right returning! Note: after RN 14, the right turn will almost feel like a U-turn, but stay close to the channel markers.

TIDES AND CURRENTS: Mean tidal range is 4 feet.

MOORINGS AND ANCHORAGE: We have reserved and pre-paid for moorings at Parker's Boatyard. When entering the fairway, the Parker's moorings are on the starboard side. Hail Parker's Boatyard on Channel 69 when you enter the fairway. Inform them that you are with the BYC and have a reserved mooring. Provide the name of your boat.

Hospital Cove is a popular anchorage location, off the south channel, is well sheltered with depths of 7 to 10 feet. The narrow finger of deep water just east of Bassetts Island is a popular alternative. More convenient, though less protected, is the area between the south end of Bassetts Island and Scraggy Neck. This outer anchorage is useful as a short stop before or after transiting the Canal rather than as an overnight anchorage.

FACILITIES and ACTIVITIES: Parker's Boatyard is on the east side of the small cove, about 300 yards south of the marina. Mooring rentals include the use of the facilities which include heads and showers, dinghy dock, launch service and WIFI. Fuel, water and pump-out is available at their dock and the Bourne pump-out boat is available to come to your boat. There is a ping pong table and a small lounge area located in the main building. Ice is also available for purchase.

Across the harbor, is Bassett's Island, which is a beautiful island for swimming or relaxing for the day. More information on Bassett's island available at this website:

<https://www.savebuzzardsbay.org/places-to-go/bassetts-island/>

Parker's has nets available for kids interested in crabbing or catching minnows.

Just down the street, the Bourne Conservation Walking Trails, which are beautiful trails that are wonderful for exploring and exercising. For more information and maps go to <https://www.bourneconservationtrust.org/trails.html> and click on Cataumet Greenway map and text. There is other park information on this website. Bring you insect repellent if you go on a hike.

At the yard is 2 courtesy bikes, which visiting customers are welcome to use or there are 2 local bike rental shops nearby if additional bikes are needed. The boatyard is located about 1.5 miles from the beginning of the Shining Sea Bike Path, which is a gorgeous bike path that runs from North Falmouth all the way down to Woods Hole. There are a few small stores for provisions a mile, along with a the Daily Brew coffee shop (<http://thedailybrewcoffeehouse.com/>), Cataumet mini golf course and ice cream shop(<https://www.cataumetcrossing.com/>) a restaurant and the Cataumet Fish Market. The Mini golf and Ice cream shop are open and practicing appropriate guidelines for safety.

The Chart Room restaurant, overlooking the harbor, with delicious food and cocktails has setup outdoor dining and is accepting reservations in advance. The Chart Room also does take out. Go to their website for more information on hours, menus and setup. <http://chartroomcataumet.com/>. The launch drivers are happy to bring guests to and from! It is an .8 mile walk and you may be able to dingy over as well.

Pocasset Village, located at the intersection of Barlow's Landing Road and Shore Road, has a bakery shop, gas station, pizza and seafood restaurants, small variety store, barber shop and church, which are within an easy walk of Barlow's Boatyard in the Pocasset River but are a bit more of a hike from Kingman's or Parker's Boatyard in Red Brook Harbor.

Harbormaster: 508-759-0623

GATHERING PLACE & TIME:

August 4th will be a free night. You can reserve a table at the Chart Room (or do take-out), or walk into town for ice cream. There will be a BBQ available at Parker's and you can also use the tables and area on the Parker's grounds to meet up with other club members.

August 5th – Dinner at Parker's catered by Chef Roland's Catering. Picnic tables will be setup in the open area by the club. You can also bring your own table and chairs to for additional dining locations. Bring your own libations and cups. The meals will all be pre-packaged and will be available to take back to your boat if you prefer to dine onboard.

NOAA CHART:

NOAA charts 13236, 13229, and 13230

Chart Kit Region 2 pages 33 and 35

Chart Kit Region 3, pages 75 and 83A

Thursday, August 6th: Marion Harbor – Beverly Yacht Club

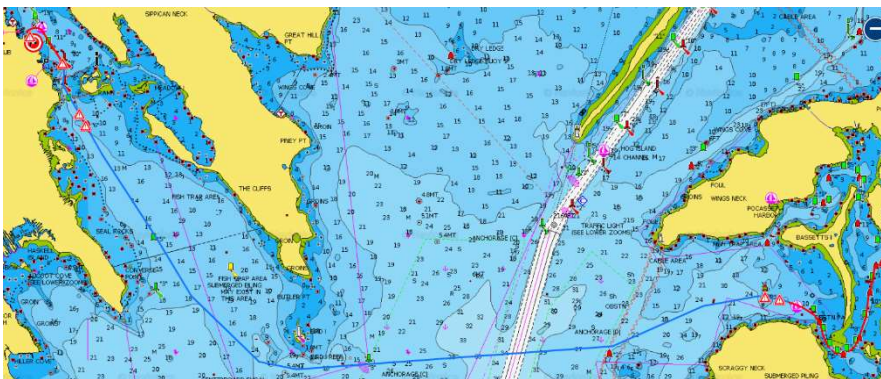


DAY CAPTAIN: Greg Aikman – “Penguin” 617-458-1903

BRIEF DESCRIPTION of PORT of CALL: Marion - Beverly Yacht Club

DISTANCE: 9 NM from Parker's Boat Yard

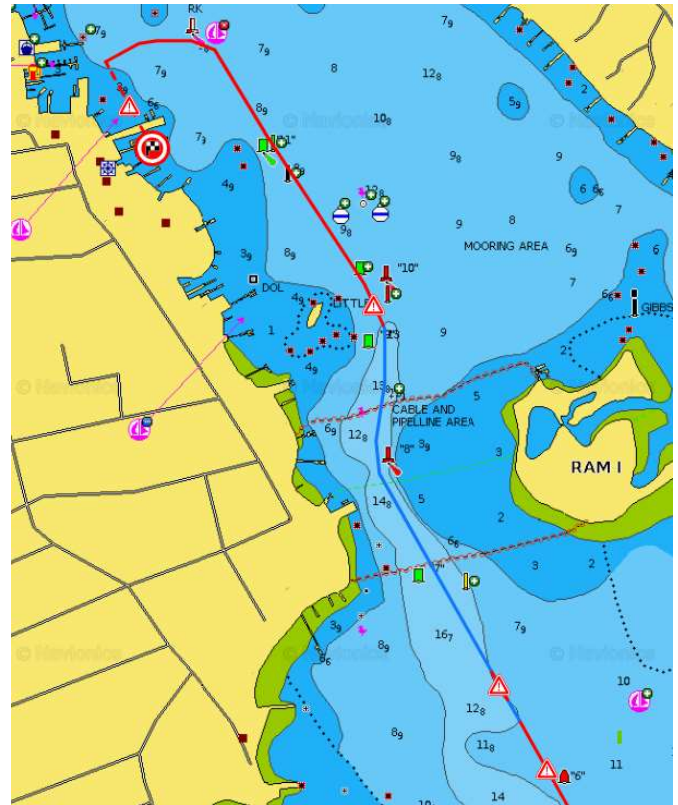
NAVIGATION: Sippican Harbor is located in the northern portion of Buzzards Bay (see chart #13230). From centerboard shoal (R"2) follow a NNE course to red nun "6". Keep cans "3" and "5" to port. Enter the inner harbor keeping can "7" to port. Turn northerly at red flasher (R"8"), leaving that to starboard. Keep can "9" to port and follow the fairway (approx. NNE course) for 200-300 yards or so.



Map on left is an overview of route and final approach (on next page)

TIDES AND CURRENTS: At around 9:07am the current changes and starts going north into the Canal. The route from Parker's to Beverly YC goes across the current. The current is modest at 1/3 kts, see graph and table below

Date Time (LST/LDT)	Event	Speed (knots)
8/6/2020 6:36	slack	-
8/6/2020 9:00	flood	0.33
8/6/2020 11:36	slack	-
8/6/2020 13:54	ebb	-0.32



MOORINGS and ANCHORAGE: We have reserved and pre-paid for moorings at Beverly Yacht. Depending on their availability you may need to raft. When entering the harbor hail the Beverly Yacht club on Channel 68. Inform them that you are with the BYC and have a reserved mooring. Provide the name of your boat.

There is a marked, designated anchorage area just north of Ram Island. Anchoring anywhere else in Sippican Harbor requires approval from the harbormaster.

FACILITIES: The Beverly Yacht Club is to port on the western shore of the inner harbor. You are welcome to use the 2 restrooms and showers. There is only 10-minute docking at the Club. All boats on a Beverly Yacht Club mooring should use the BYC launch service since there is very limited dinghy space available at the club (only three guest dinghy spots). On Thursday 8/6 the launch hours are 8 AM to 9 PM

The Marion General Store is a block away. From BYC, walk up Main Street and it is on the corner of Main and Front Street. Well stocked “general” store with liquor, butcher, baked goods, etc., etc.

Next door to the MGS is Kate’s Simple Eats. It serves breakfast starting at 8:00, and lunch from 10 – 3 with full bar. Take out and eat outside and they have recently reopened their inside dining. And next door to Kate’s is a small liquor store ... pricey but if desperate! Another great choice is The Atlantic Bistro, on Spring St, walkable from the club.

Some additional restaurants are 25-minute walk that can be shortened to about 10 minutes if you dingy over to the town dock between Tabor and Burr's boatyard. There is a launch ramp next to it. The restaurants are Brew Fish and Cilantro.

10-minute walk out of BYC, turning left on Water Street, takes you to Silvershell Beach ... town beach which is very nice.

Fuel & water available at Burr Brothers (head of harbor) and Barden's (next to BYC). There is pump out service available by contacting the Marion Harbormaster and a self-serve at the town dock.

GATHERING PLACE & TIME: Free Night. The Beverly Yacht Club's bar will not be available for us to us. You can visit any of the restaurants in town that are listed in the guide.

The Beverly Yacht Club, one of the oldest yacht clubs in America, was founded in 1872 by young men who summered in Beverly. They were upset that the newly formed Eastern Yacht Club in Marblehead refused to recognize yachts under 30 feet in length on the waterline for the races that they held. Thus, Edward and Walter Burgess (the famous yacht designer), at a supper party at their home in Boston on February 24, 1872, formally launched the Beverly Yacht Club.

The first regatta was held by the club on June 22, 1872, in which 11 boats, 10 catboats, and a sloop started in three classes. For the first 23 years, the Beverly Yacht Club had no fixed abode; they held races and regattas at ports most convenient to the members.

By the mid-1880s, regattas were held in Monument Beach and Marblehead, but as the Buzzards Bay membership increased, the Beverly Yacht Club leased its first clubhouse on Wing's Neck in 1895. In 1913, the club moved to Marion, where it has been located ever since. In 1895 the Beverly Yacht Club moved to Pocasset, and in 1913 to Marion where it remains today, name unchanged.

Town of Marion

Originally settled in 1679 under the name of Sepecan, the town became known for its shipyards and salt works. In 1872, Sippican became the Town of Marion, named for the revolution war hero, general Francis Marion, also known as the "Swamp Fox."

During the 19th century, Sippican Harbor was the third most productive whaling center in the United States. Twenty-three whalers made over 100 trips to the South Atlantic and Pacific. You will use wharfs formerly reserved for whaling vessels and their cargos of oil and baleen.

In recent years, Sippican Harbor has become completely devoted to yachting activities, with no commercial shipping. It is one of the best yachting harbors on the east coast. Today, Marion is a residential community with a winter population of about 5200, swelling to 8000 in the Summer. The buildings of Tabor Academy, a college preparatory school, can be seen on the west side of the harbor.

Friday, August 7: Padanaram – New Bedford Yacht Club



DAY CAPTAINS: Barry and Denise Schrutt, Freedom 28, “**Mind Eraser**” – Barry: 401-301-9797
Denise: 401-996-2611

BRIEF DESCRIPTION OF PORT: Padanaram is a coastal village in South Dartmouth, Massachusetts, United States. As the Boston Globe stated, "It's where life slows down." The Buzzards Bay swing bridge which opens every hour to allow the many sailboats to pass in and out of the harbor literally slows things down.

The village is listed on the [National Register of Historic Places](#) as the Padanaram Village Historic District. The historic district is roughly bounded by Elm, Water, Middle, High, Pleasant, Prospect, Hill, School, Fremont, and Bridge Streets. The district features [Colonial Revival](#), Late [Victorian](#), and [Federal architecture](#) and was added to the National Register of Historic Places in 1985.

DISTANCE: 18 NM from Marion

NAVIGATION:

Please note headings and distances are approximate and are meant only to be a guide. Skippers need to be cognizant of their surroundings and choose whatever course is best for them utilizing charts and plotting courses.

Exit Marion/Sippican Harbor toward Converse Point, keeping Green Can 3 (GC-3) to starboard (STB).

Inner Harbor to GC-3 > 2.3nm

Heading: 154* True (* denotes degrees)

Head south passing Angelica Point, Daybeacon 2A, Red Lateral

GC-3 to Angelica Point > 2.4nm

Heading 201* True

Continue southerly course passing Nye Ledge, G-1, FL G Bell, (41.36.823N; 70.45.821W)

Angelica Point to Nye Ledge > 1.3 nm

Heading 201* True

Continue south to 2SE New Bedford Southeast Approach Bell (41.34.037N; 70.48.732W)

Nye Ledge to 2SE > 3.5nm

Heading 210* True

Head Westerly to Apponaganset Bay Lighted Gong Buoy (41.33.169N; 70.54.605W) passing closely on STB New Bedford Channel Lighted Buoy G-5.

2SE to G-5 > 2.3nm

Heading 258* True

G-5 to AB Lighted Gong Buoy > 2.2nm

Heading 262* True

Continue into Apponaganset Bay to New Bedford Yacht Club

AB Buoy to NBYC > 2.4 nm

Heading 321*True

MOORINGS AND ANCHORAGE: We have reserved moorings at the New Bedford Yacht Club. Hail the NBYC launch on Channel 68 once you have arrived at nun "12". Inform them that you are with the BYC and have a reserved mooring. Provide the name of your boat. Then, once you've settled into your mooring, NBYC requests that you check in at their office ashore to register and pay for the mooring. It is located in the main building. The cost is \$45.00 - \$55.00 based on the length of your boat. You will receive a pass from NBYC allowing you to use the facilities (Bar, Restaurant and Showers) Please don't forget to wear your mask at all times on the property.

FACILITIES: NBYC has a fuel dock, Gas or diesel. Ice is also available on the dock. Pump out is available CH #9. A dumpster is available for boat trash.

The bar and restaurant will be open, however, Lawn and Deck only for dining no inside dining or drinking

There are plenty of restaurants available in town. It's a 2 two-minute walk to Sail Loft Bar and Grille, Chummlies, The Little Moss, Black Bass and Ice Cream shop. Some shopping in town. There is a great little market open from 7-AM 7-PM Farm & Coast on Bridge St., soup to nuts. deli, bakery, Beer, wine and prepared foods.

GATHERING PLACE and TIME: Denise is organizing a dinner seating for our cruise members on the lawn of the New Bedford Yacht club provided by their restaurant. You will be able to order beverage and food items from their menu. Contact Denise at dschrutt@gmail.com if interested in dining at NBYC.

Saturday, August 8th: Bristol Yacht Club



DAY CAPTAIN(S): Brad and Wendy de Wolf

BRIEF DESCRIPTION of PORT of CALL – The Bristol Yacht Club, the premier yacht club in Narragansett Bay!

DISTANCE: 36 NM from Padanaram

NAVIGATION/TIDES & CURRENT: This last 36-mile sail, our longest, takes us down Buzzards Bay, into the prevailing winds, and then up the Sakonnet on what we hope is a broad reach, then through the narrows at Tiverton, around the corner, under the Mount Hope Bridge, and back to Bristol Harbor. To take advantage of the tide, you will want to leave Padanaram very early in the morning or very late in the afternoon. The distance from Padanaram to Tiverton Stone Bridge is approximately 30 nm. If you average 5 knots that is six hours. Ebb begins at the bridge begins at 1119. Maximum ebb is about two hours later. That would mean a departure time of somewhere between 0500 and 0600. See below for further details.

High tide on the Sakonnet is at 1142 (41.4650N/71.1933W)

Current:

Slack before Ebb is 1132; Maximum Ebb is 0.38 mph at 1358

Slack before Flood is 1639; Maximum Flood is 0.41 mph at 2059

Departing Padanarum, you'll pass Round Hill Point, keeping Dumpling Rocks Light and G-5 to starboard. Slack water at Round Hill Point is at 0452. Head southwest (225 degrees) down Buzzards Bay with perhaps half a knot of current against you, for about 7nm at which time you'll round Hen and Chickens to starboard. Another 7.6nm on a 260 heading will put you by Schuyler Ledge Bell Buoy 2.

Turn to starboard and enter the Sakonnet, with a fair current, and perhaps a fair wind. The narrows at Tiverton Stone Bridge is always the concern when traversing the Sakonnet. The distance from Schuyler Ledge Bell to the Stone Bridge is approximately 11nm as the crow flies. It would behoove the prudent sailor to be approaching the Narrows as close to slack as possible, particularly if catching it before it begins to ebb.

Tiverton Stone Bridge (41.6250N/71.2167W)

Slack before Ebb is 1119; Maximum Ebb is 3.02 mph at 1318

Slack before Flood is 1635; Maximum Flood is 2.84 mph at 1752